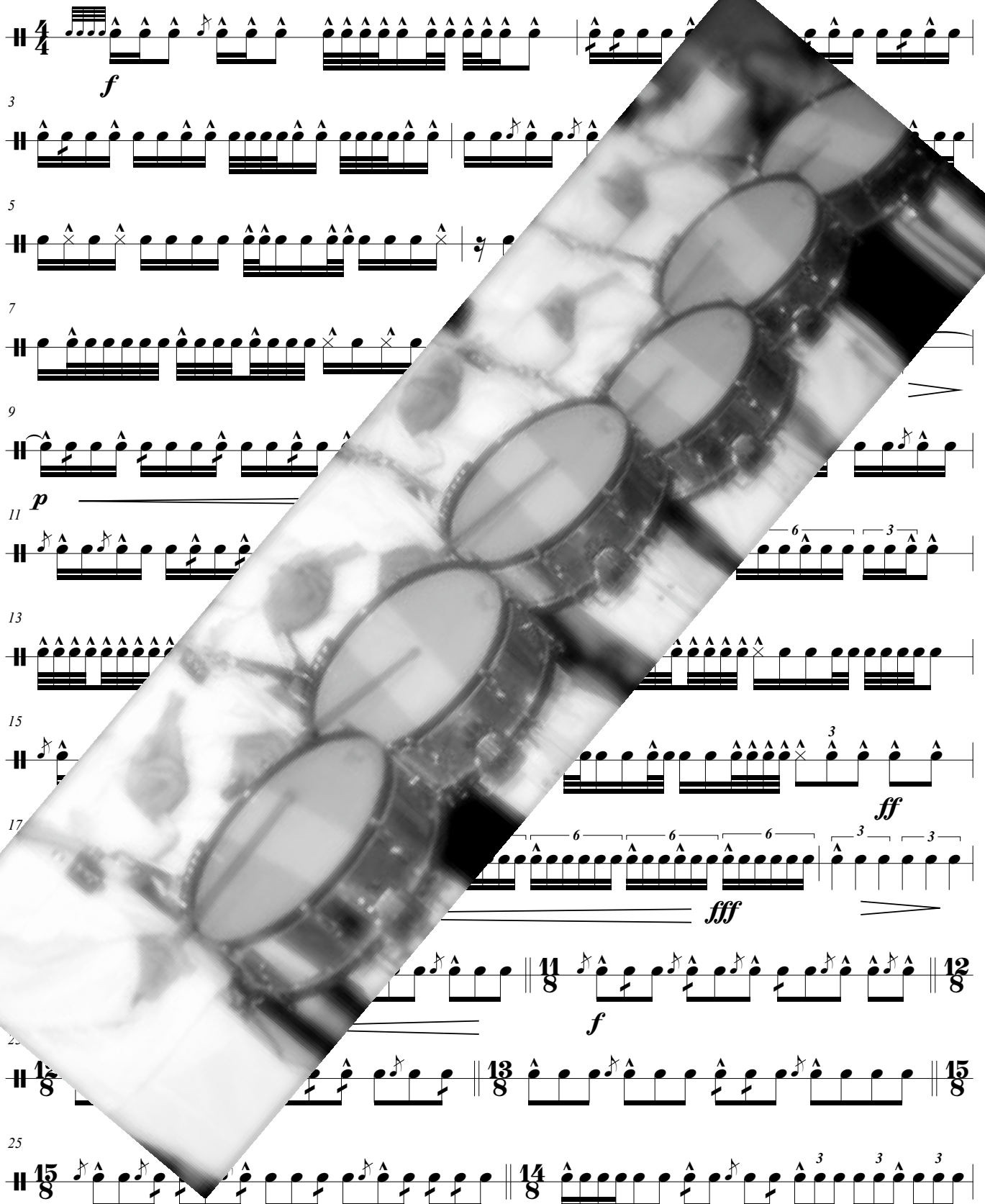


# Roos

Snare ♩ = 100

Herman van Daln



3 *f*

5

7

9

11 *p*

13

15

17 *ff*

21 *f*

25

15 8 13 8 15 8

14 8 15 8 15 8

The sheet music is for a snare drum in 4/4 time, with a tempo of 100 beats per minute. It consists of 15 measures. The music features various rhythmic patterns, including eighth and sixteenth notes, and rests. Dynamics range from piano (*p*) to fortissimo (*ff*). There are also some triplet and sixteenth-note groupings. The piece ends with a double bar line and repeat signs.

Artikelnr. 3078 - eigen gebruik

Worldcopyright by: Drums2play, Benraatshoef 1, 4941 TL Raamsdonksveer

Telefoon: 06-27302070, E-mail: info@drums2play.nl Buma stemra nr.2006310 kvk.nr. 18084643

27 Musical notation for measures 27-28. Measure 27 contains a series of eighth notes with accents. Measure 28 contains a series of eighth notes with accents and a double bar line with a repeat sign. A tempo marking of 12/8 is present.

29 Musical notation for measures 29-30. Measure 29 contains eighth notes with accents. Measure 30 contains eighth notes with accents and a double bar line with a repeat sign. A tempo marking of 15/8 is present.

31 Musical notation for measures 31-32. Measure 31 contains eighth notes with accents. Measure 32 contains eighth notes with accents and a double bar line with a repeat sign. A tempo marking of 12/8 is present.

♩ = 100 - 128 Traditional

33 Musical notation for measures 33-34. Measure 33 contains a quarter rest followed by a quarter note with an accent. Measure 34 contains eighth notes with accents, including triplets and a sextuplet. A 2/4 time signature is shown. Dynamics markings *f* and *p* are present.

39 Musical notation for measures 39-40. Measure 39 contains eighth notes with accents. Measure 40 contains eighth notes with accents and a double bar line with a repeat sign.

44 Musical notation for measures 44-45. Measure 44 contains eighth notes with accents, including a triplet. Measure 45 contains eighth notes with accents and a double bar line with a repeat sign. A 6/8 time signature is shown.

50 Musical notation for measures 50-51. Measure 50 contains eighth notes with accents. Measure 51 contains eighth notes with accents and a double bar line with a repeat sign. A 6/8 time signature is shown.

53 Musical notation for measures 53-54. Measure 53 contains eighth notes with accents, including triplets. Measure 54 contains eighth notes with accents and a double bar line with a repeat sign. A 6/8 time signature is shown.

58 Musical notation for measures 58-59. Measure 58 contains eighth notes with accents. Measure 59 contains eighth notes with accents, including a triplet. A 6/8 time signature is shown.

64 Musical notation for measures 64-65. Measure 64 contains eighth notes with accents. Measure 65 contains eighth notes with accents and a double bar line with a repeat sign. A 6/8 time signature is shown.

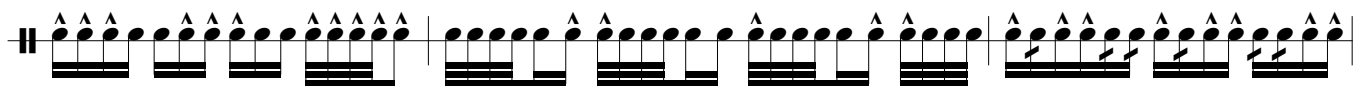
♩ = 80 - 100

71 Musical notation for measures 71-72. Measure 71 contains eighth notes with accents. Measure 72 contains eighth notes with accents and a double bar line with a repeat sign. A 11/8 time signature is shown.

73 Musical notation for measures 73-74. Measure 73 contains eighth notes with accents. Measure 74 contains eighth notes with accents and a double bar line with a repeat sign. A 7/8 time signature is shown.

74 Musical notation for measures 74-75. Measure 74 contains eighth notes with accents. Measure 75 contains eighth notes with accents and a double bar line with a repeat sign. A 7/8 time signature is shown.

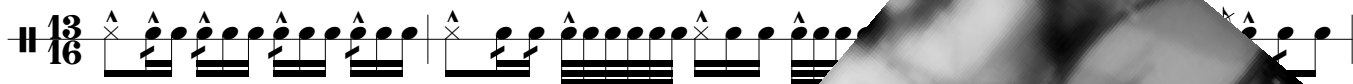
76



79



82



85



*mf*

87



*f*

89



90



*mp*

93



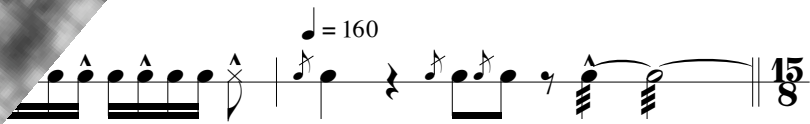
96



98

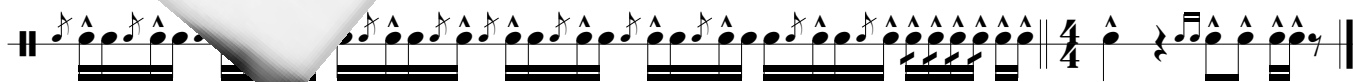


$\text{♩} = 160$



*sfz*

103



*f*

*ff*

$\text{♩} = 160$